

NOTE: Short radius post bolt washers located on post nos. 1P-4P and 1S-2S

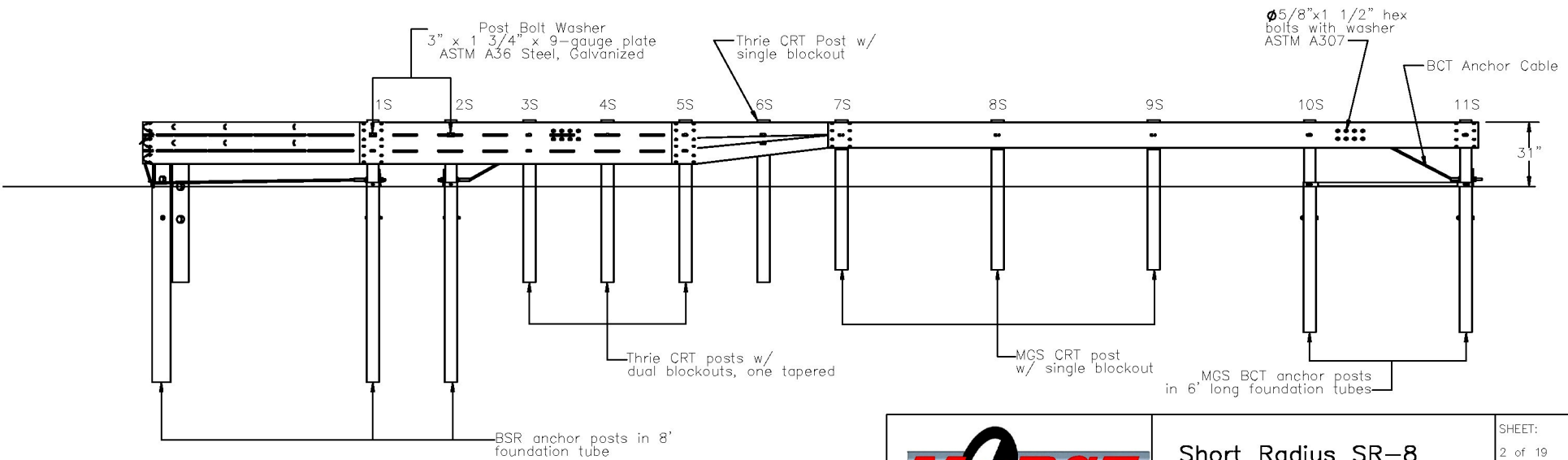
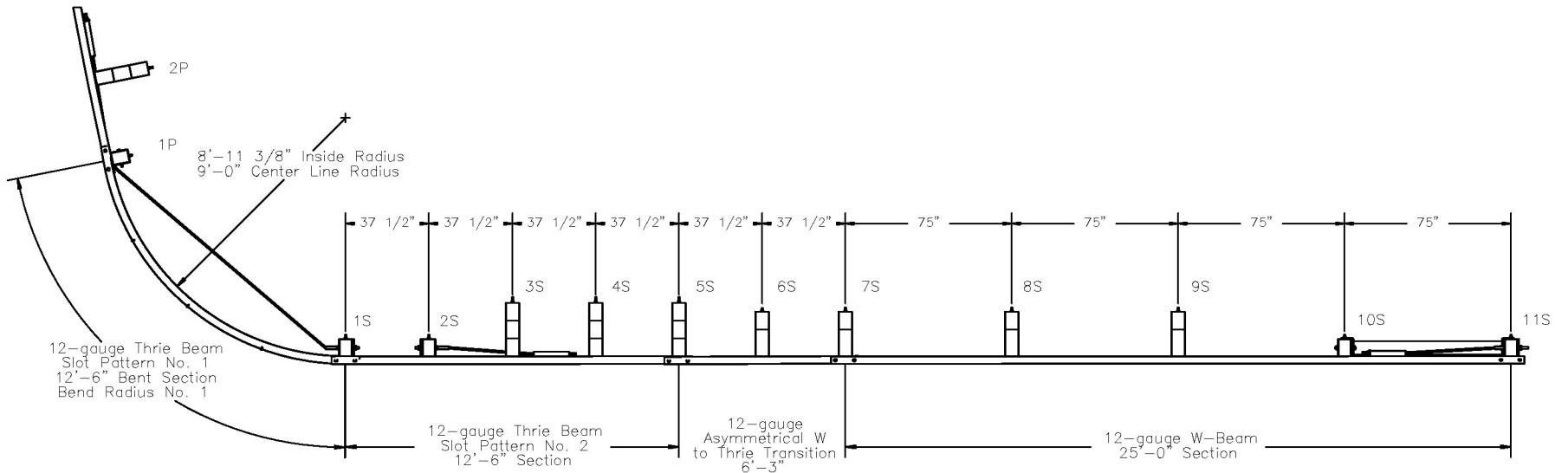


Midwest Roadside Safety Facility

Short Radius SR-8
System Layout

SHEET: 1 of 19
DATE: 7/31/2007
DRAWN BY: CSS

DWG. NAME: Short_Radius_sr8_R4
SCALE: 1:125
UNITS: Inches
REV. BY: KAP, BWB



Midwest Roadside
 Safety Facility

Short Radius SR-8

Layout for TL-2 Side

SHEET:
 2 of 19

DATE:
 7/31/2007

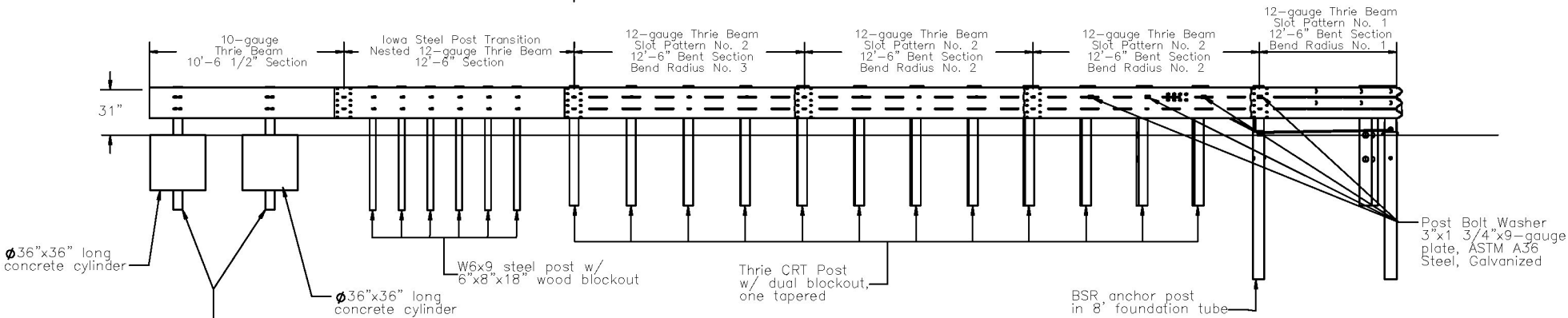
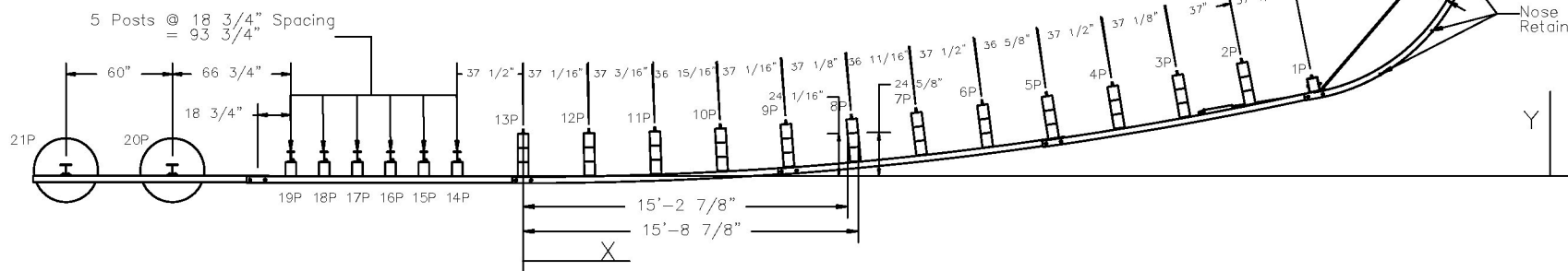
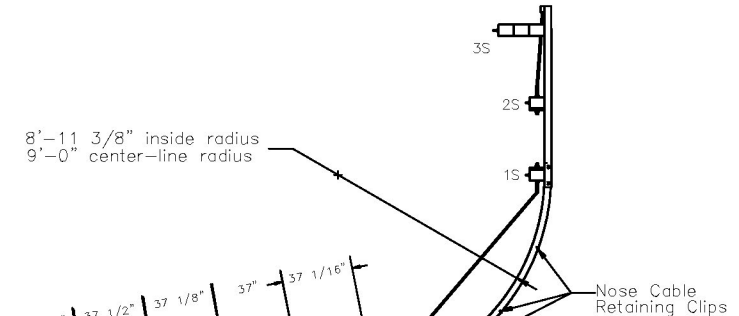
DRAWN BY:
 CSS

DWG. NAME:
 Short_Radius_sr8_R4

SCALE: 1:75
 UNITS: Inches

REV. BY:
 KAP, BWB

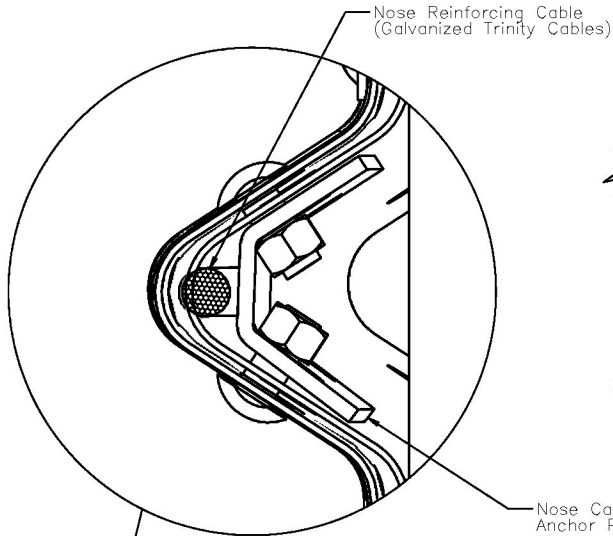
Post No.	Front Face D.S. Edge		Front Face U.S. Edge	
	X	Y	X	Y
1P	36'-11 1/16"	3'-11 5/8"	37'-4 5/8"	4'-0 5/8"
2P	33'-7 7/8"	4'-7 5/8"	34'-1 3/4"	4'-8 13/16"
3P	30'-7 5/16"	4'-0 3/4"	31'-1 1/4"	4'-1 13/16"
4P	27'-6 9/16"	3'-6 1/2"	28'-0 1/2"	3'-7 7/16"
5P	24'-5 1/2"	3'-0 13/16"	24'-11 7/16"	3'-1 3/4"
6P	21'-4 15/16"	2'-7 15/16"	21'-10 7/8"	2'-8 11/16"
7P	18'-3 11/16"	2'-3 5/8"	18'-9 5/8"	2'-4 3/8"
8P	15'-2 7/8"	2'-0 1/16"	15'-8 7/8"	2'-0 5/8"
9P	12'-1 11/16"	1'-9 1/8"	12'-7 11/16"	1'-9 9/16"
10P	9'-0 9/16"	1'-6 13/16"	9'-6 9/16"	1'-7 3/16"
11P	5'-11 1/2"	1'-5 1/4"	6'-5 1/2"	1'-5 7/16"
12P	2'-10 1/4"	1'-4 1/4"	3'-4 1/4"	1'-4 3/8"
13P	-0'-3"	1'-4"	0'-3"	1'-4"



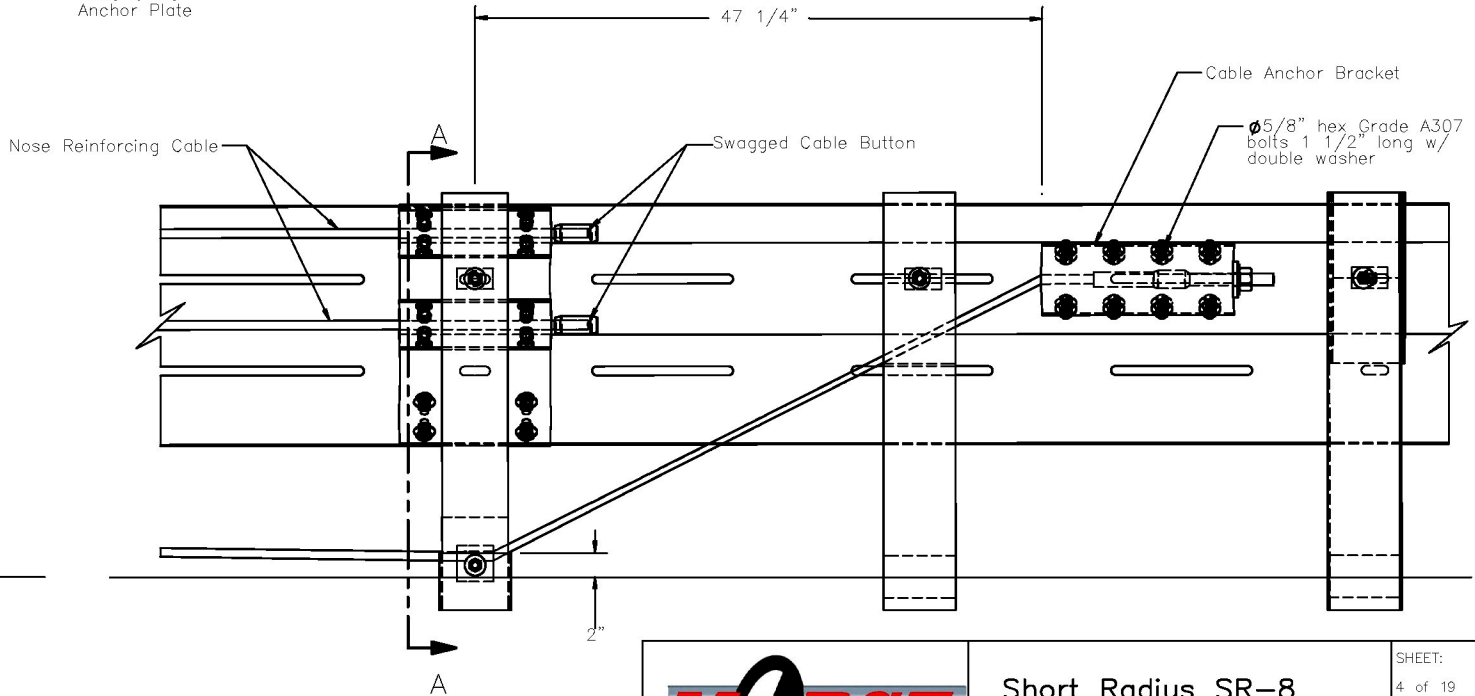
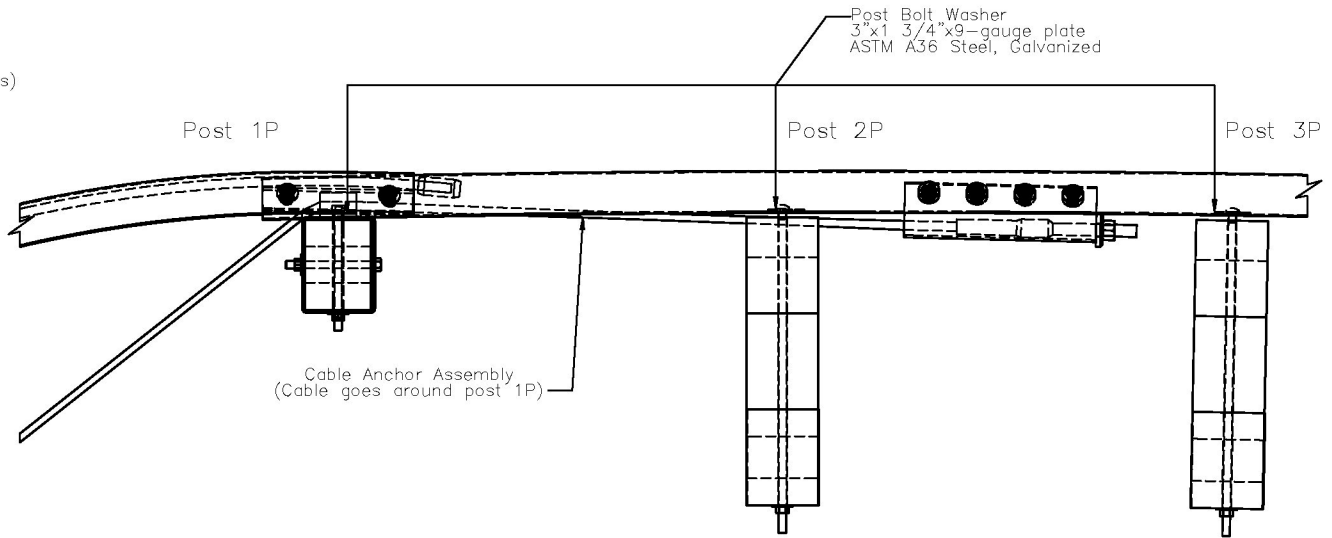
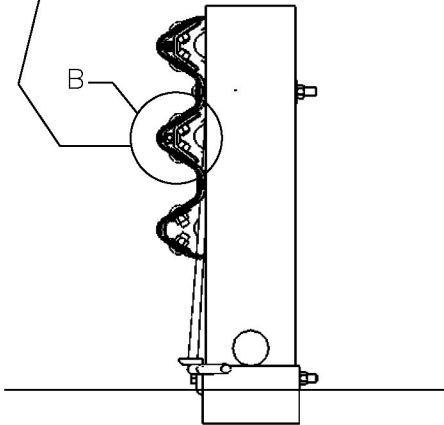
Midwest Roadside Safety Facility

Short Radius SR-8
Layout for TL-3 Side & Post Locations

DWG. NAME: Short_Radius_sr8_R4	SCALE: 1:100 UNITS: Inches	SHEET: 3 of 19
		DATE: 7/31/2007
		DRAWN BY: CSS
		REV. BY: KAP, BWB



DETAIL B
SCALE 1 : 3



Midwest Roadside
Safety Facility

Short Radius SR-8

Cable Anchor Detail
TL-3 Side

DWG. NAME:
Short_Radius_sr8_R4

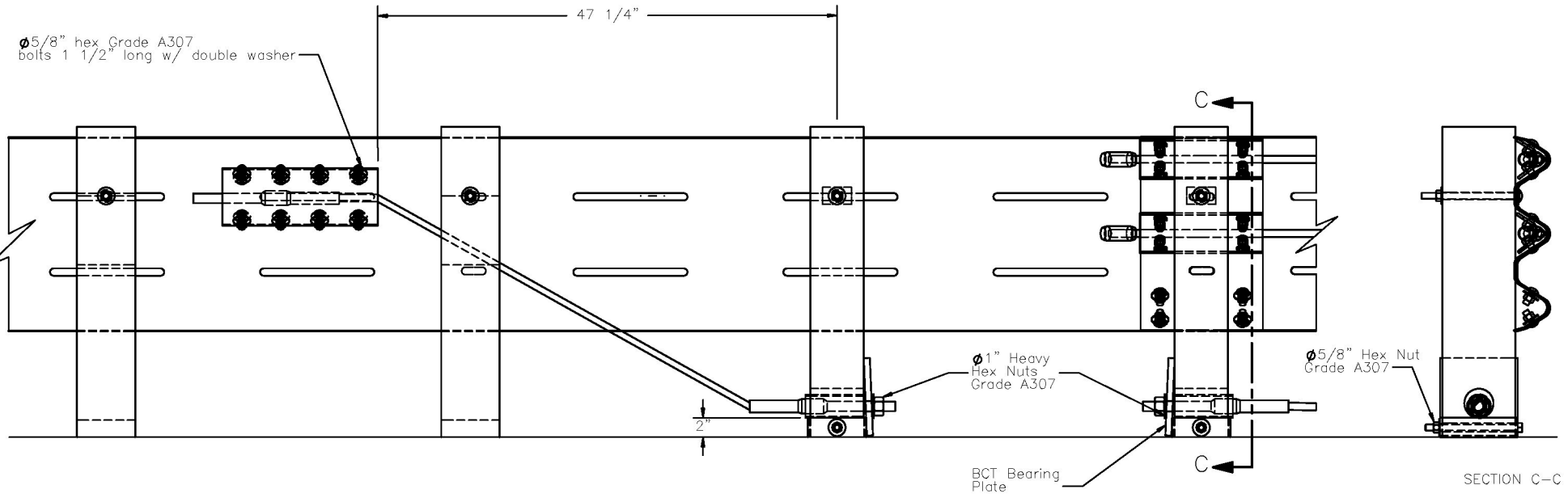
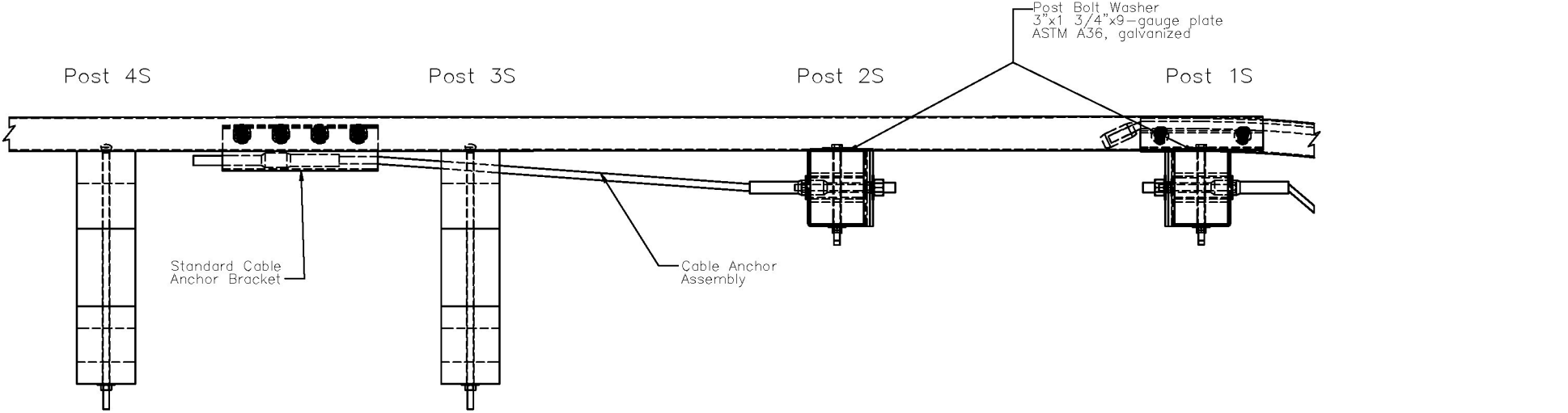
SCALE: 1:16
UNITS: Inches

SHEET:
4 of 19

DATE:
7/31/2007

DRAWN BY:
CSS

REV. BY:
KAP, BWB



Midwest Roadside Safety Facility

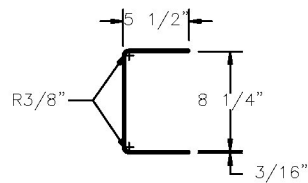
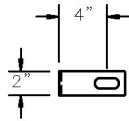
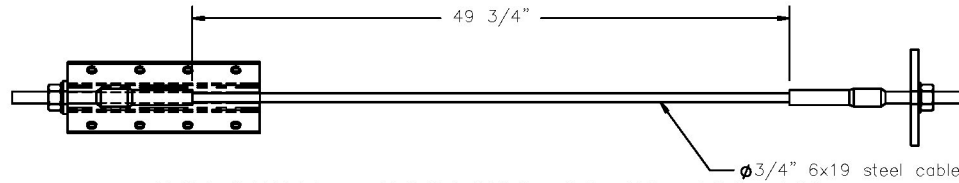
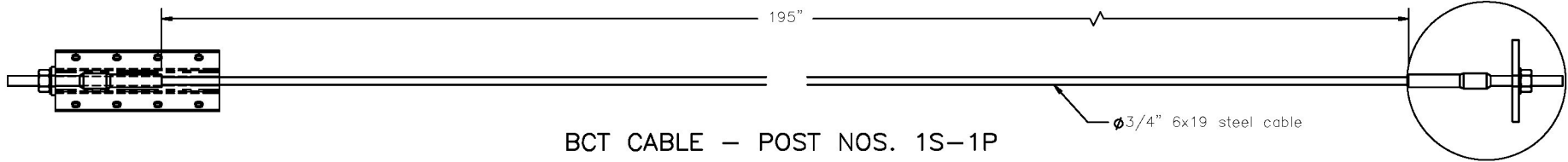
Short Radius SR-8

Cable Anchor Detail
TL-2 Side

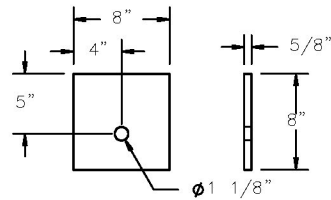
DWG. NAME:
Short_Radius_sr8_R4

SCALE: 1"=16"
UNITS: Inches

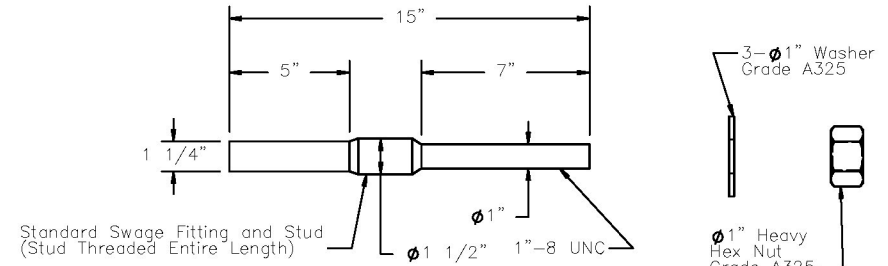
SHEET:
5 of 19
DATE:
7/31/2007
DRAWN BY:
CSS
REV. BY:
KAP, BWB



YOKE DETAILS

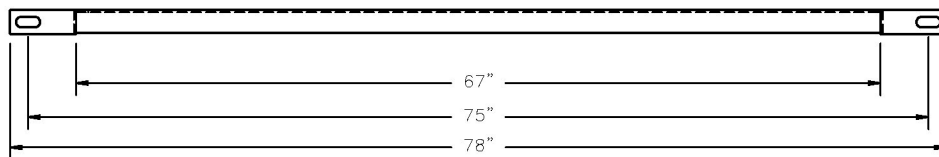
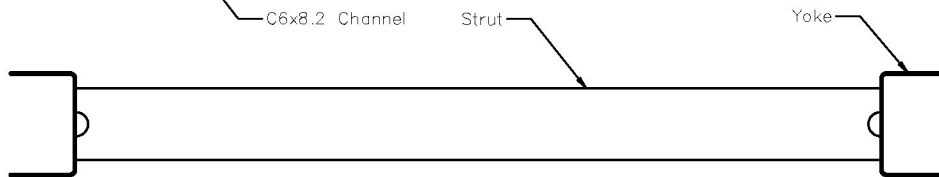


BCT BEARING PLATE
(STD PART FPB01)



CABLE ANCHOR END DETAIL
SCALE 1 : 8

STRUT DETAILS



GROUND STRUT



CABLE ANCHOR BRACKET
(STD PART FPA01)



Midwest Roadside
Safety Facility

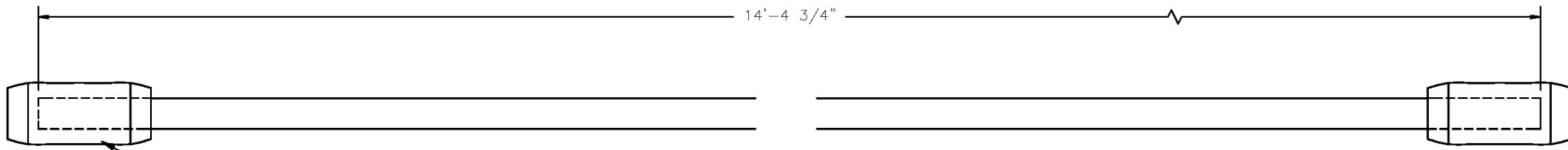
Short Radius SR-8

BCT Cable Details
Anchorage Part Details

DWG. NAME.
Short_Radius_sr8_R4

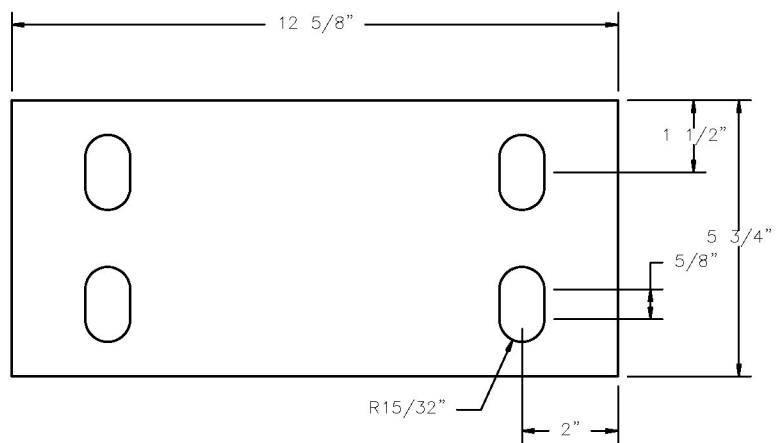
SCALE: 1:16
UNITS: Inches

SHEET:
6 of 19
DATE:
7/31/2007
DRAWN BY:
CSS
REV. BY:
KAP, BWB

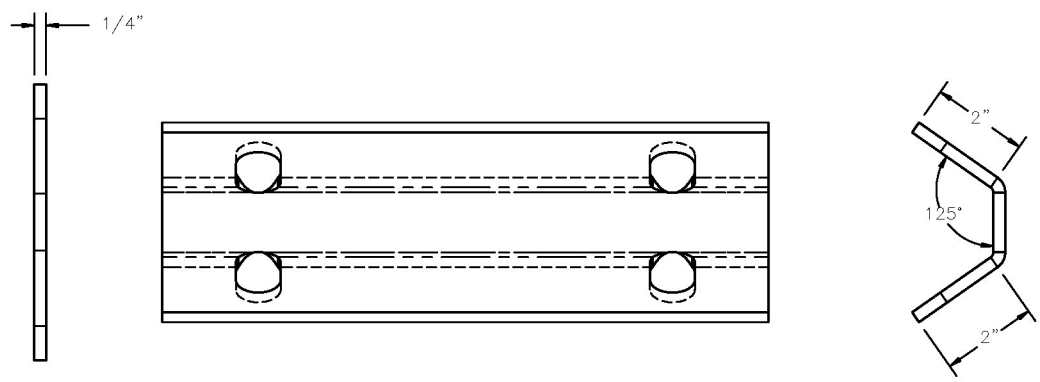


"Cold Tuff" Button, S409 Size
 No. 12 SB 2 7/8", Stock No.
 1040395 for $\phi 5/8$ " (6x25) wire rope

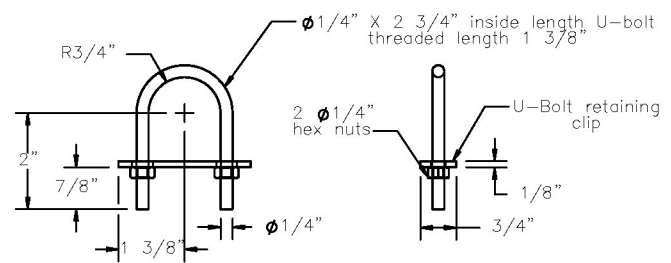
NOSE CABLE




NOSE CABLE ANCHOR PLATE



NOSE CABLE ANCHOR PLATE BENDING DIAGRAM

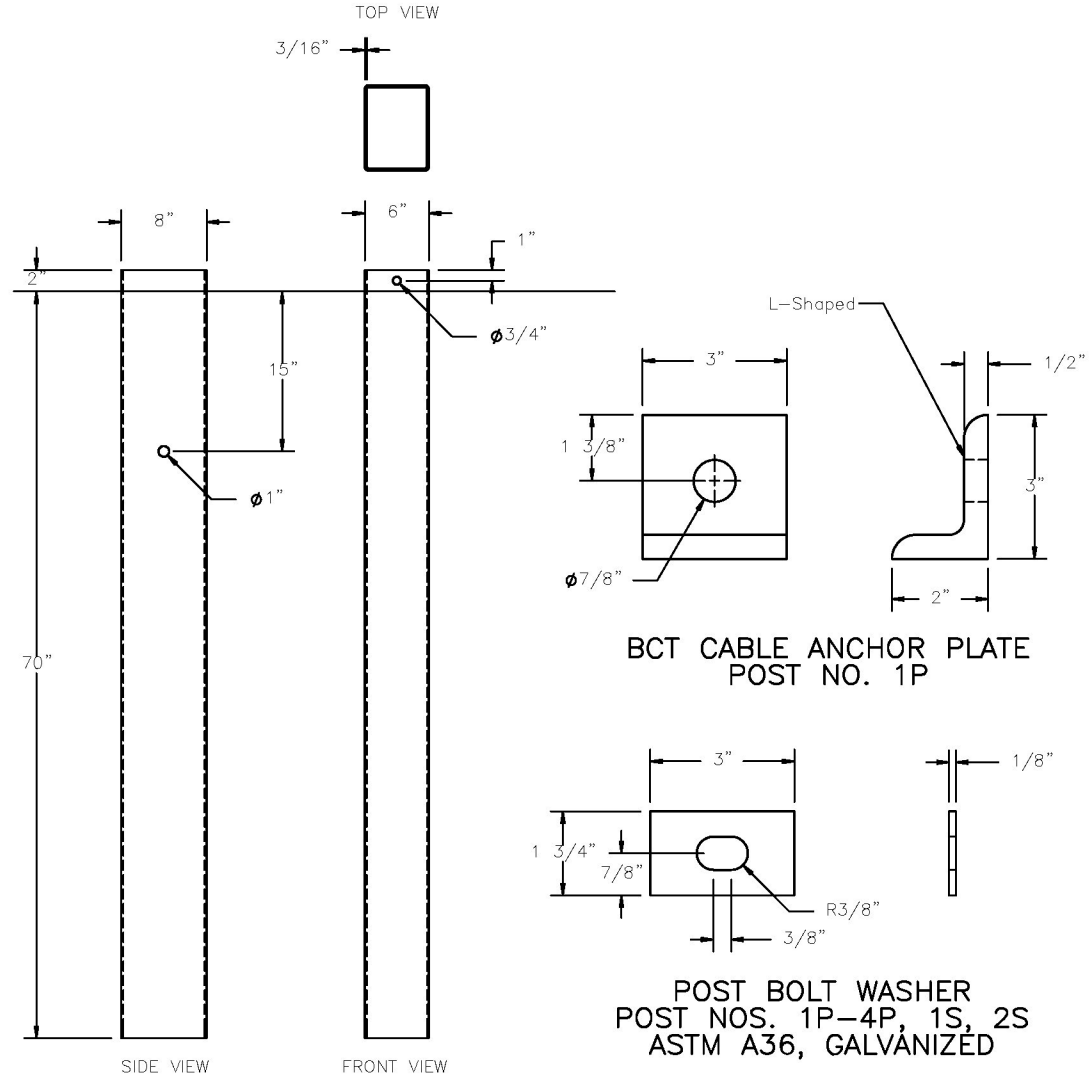
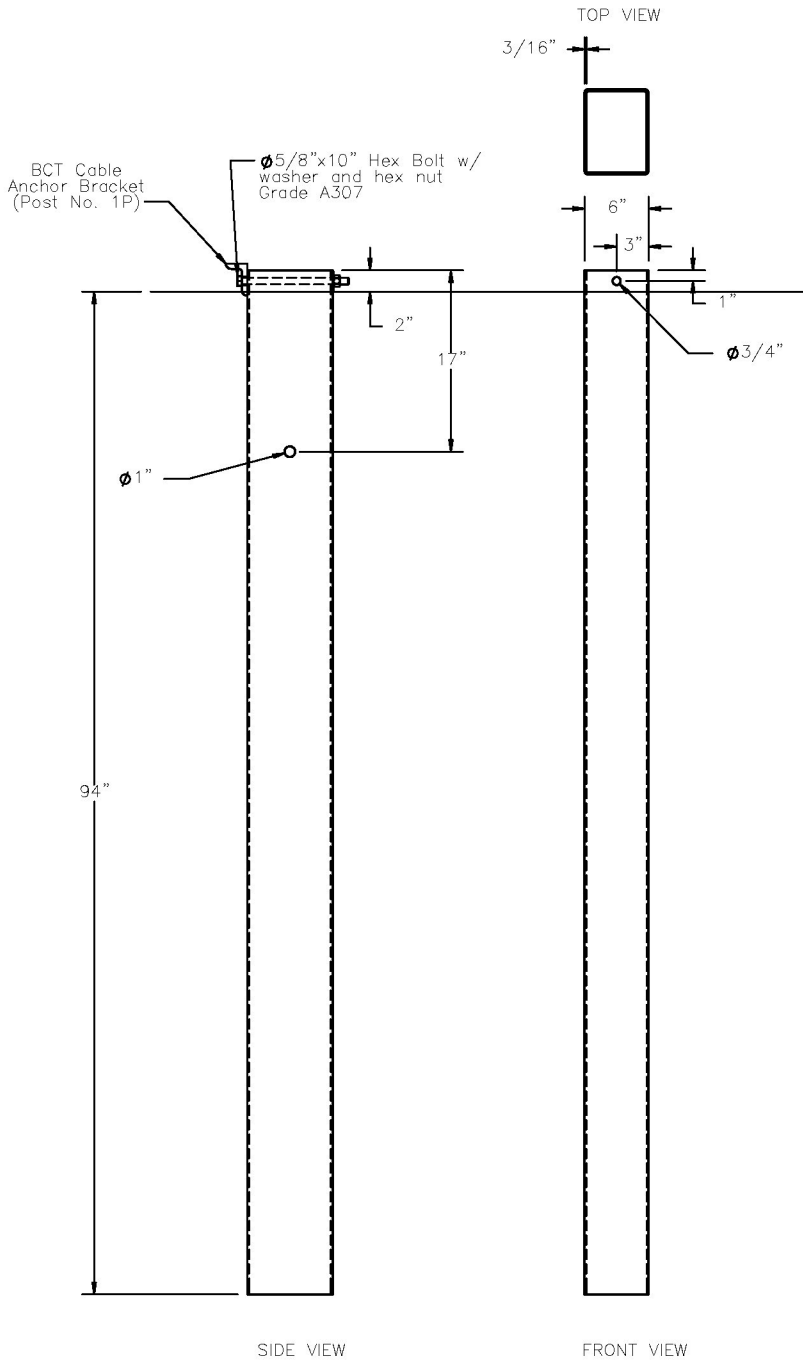


NOSE CABLE RETAINING CLIP

 Midwest Roadside Safety Facility	Short Radius SR-8 Nose Cable Anchor Plate Nose Cable Detail	SHEET: 7 of 19
	DWG. NAME: Short_Radius_sr8_R4	SCALE: 1:4 UNITS: Inches

THRIE BEAM FOUNDATION TUBE

MGS BCT FOUNDATION TUBE



Midwest Roadside Safety Facility

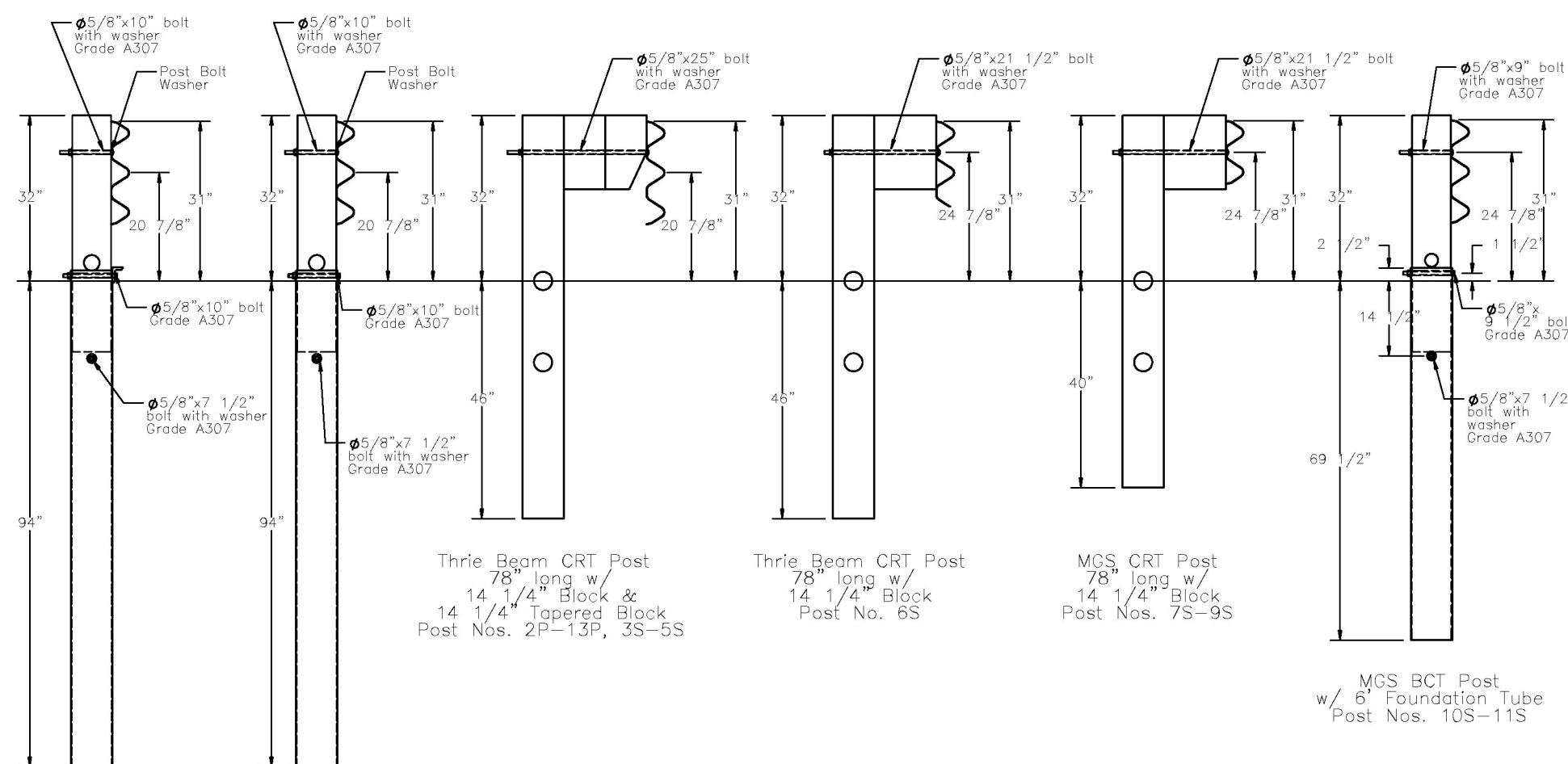
Short Radius SR-8

Foundation Tubes
BCT Cable Anchor Plate
Post Bolt Washer

DWG. NAME:
Short_Radius_sr8_R4

SCALE: None
UNITS: Inches

SHEET:
8 of 19
DATE:
7/31/2007
DRAWN BY:
CSS
REV. BY:
KAP, BWB



BSR Post
w/ 8' Foundation
Tube
Post No. 1P

BSR Post
w/ 8' Foundation
Tube
Post Nos. 1S-2S

Thrie Beam CRT Post
78" long w/
14 1/4" Block &
14 1/4" Tapered Block
Post Nos. 2P-13P, 3S-5S

Thrie Beam CRT Post
78" long w/
14 1/4" Block
Post No. 6S

MGS CRT Post
78" long w/
14 1/4" Block
Post Nos. 7S-9S

MGS BCT Post
w/ 6' Foundation Tube
Post Nos. 10S-11S



Midwest Roadside
Safety Facility

Short Radius SR-8

Post Detail
1P, 1S-2S, 2P-13P, 3S-5S,
6S, 7S-9S, 10S-11S

DWG. NAME:
Short_Radius_sr8_R4

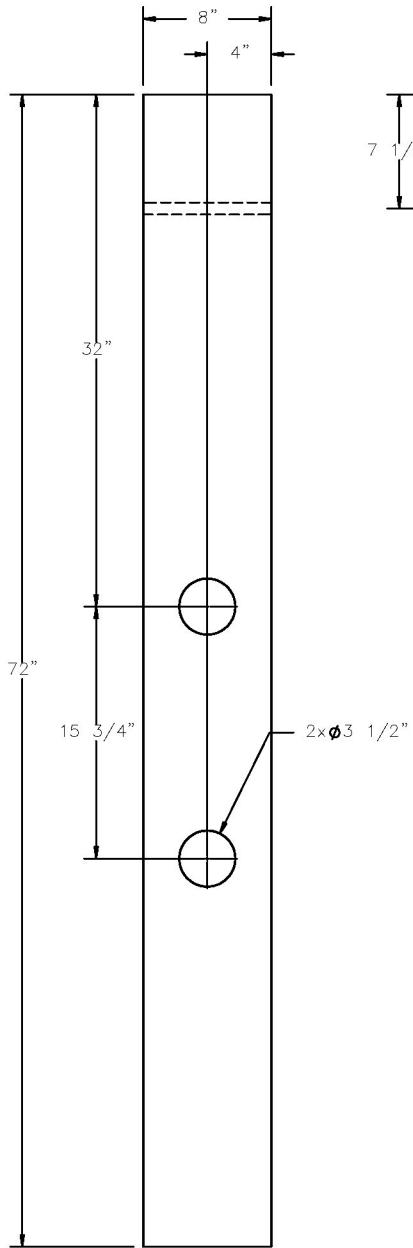
SCALE: 1:30
UNITS: Inches

SHEET:
9 of 19

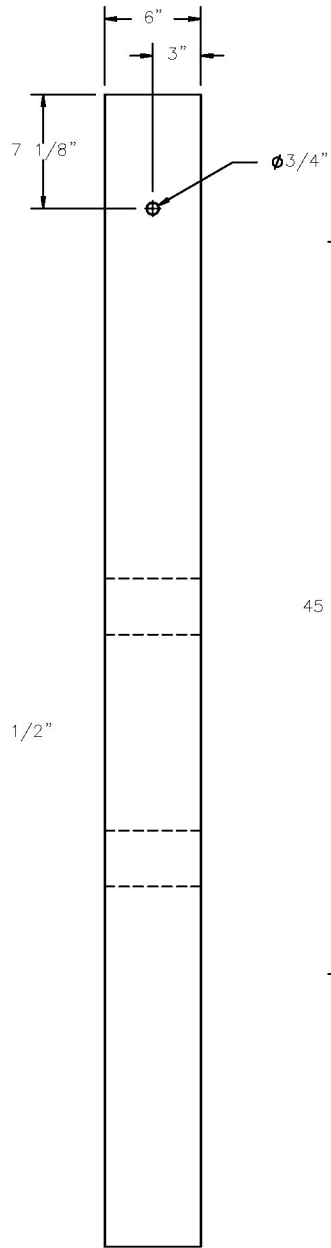
DATE:
7/31/2007

DRAWN BY:
CSS

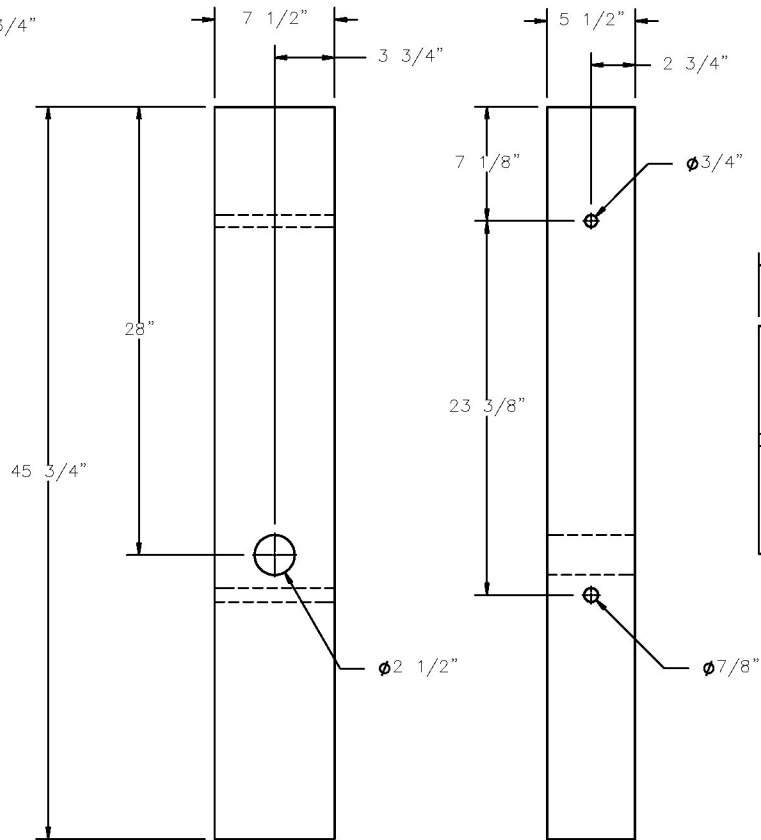
REV. BY:
KAP, BWB



MGS CRT Post



MGS BCT Post



MGS Blockout



Midwest Roadside
Safety Facility

Short Radius SR-8

MGS CRT & BCT Post Details
MGS Blockout

SHEET:
10 of 19

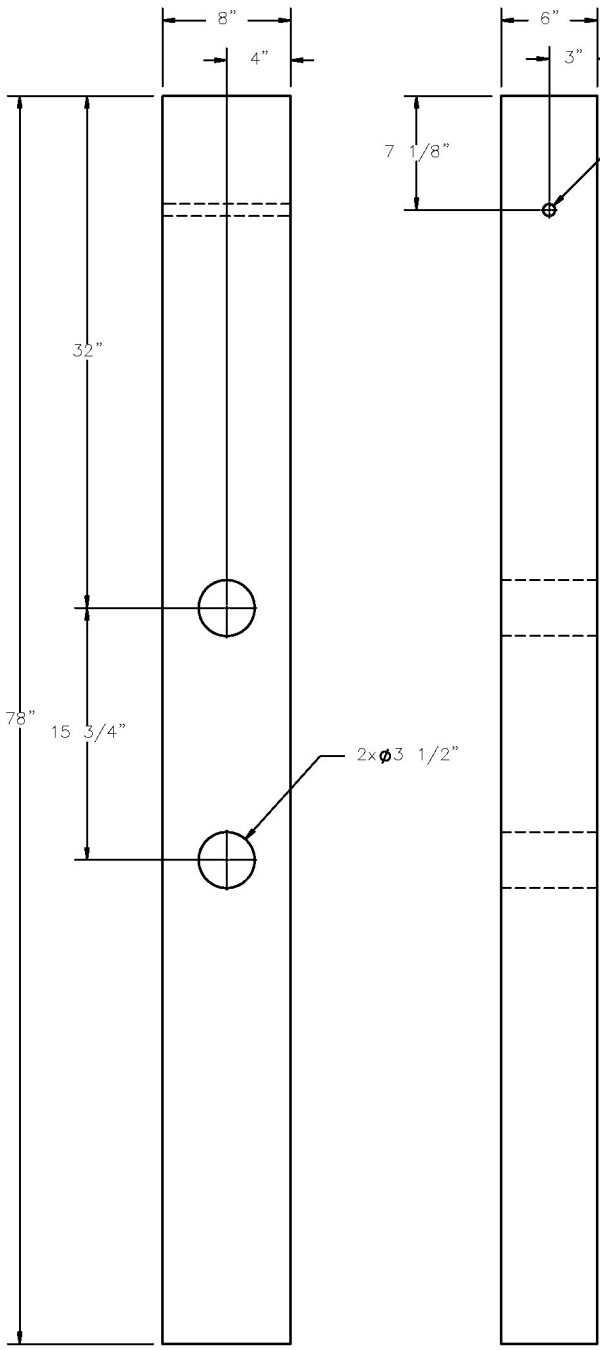
DATE:
7/31/2007

DRAWN BY:
CSS

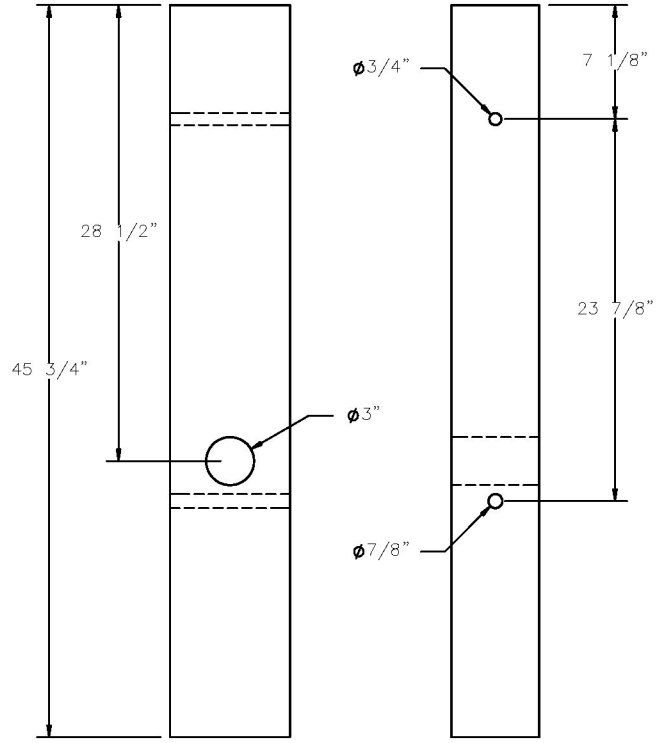
DWG. NAME:
Short_Radius_sr8_R4

SCALE: 1:12
UNITS: Inches

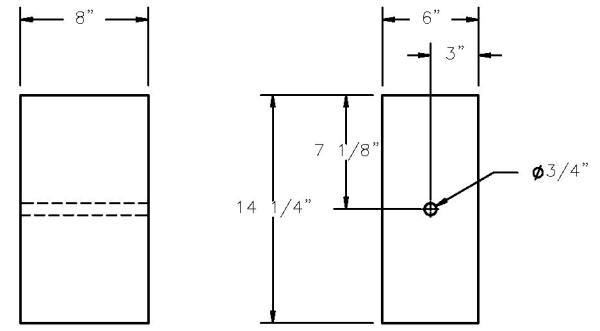
REV. BY:
KAP, BWB



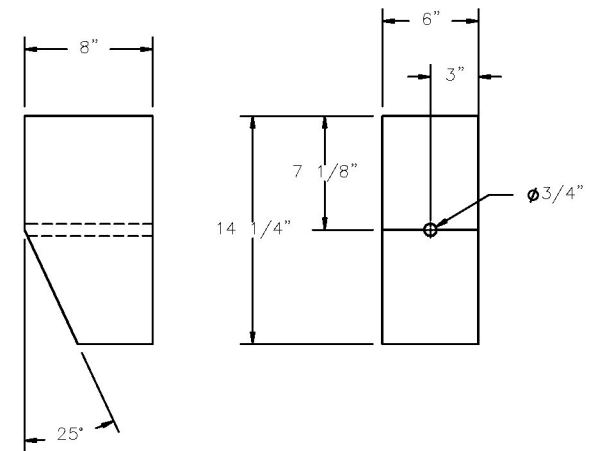
Thrie Beam CRT Post



BSR Post
(Breakaway Short Radius)



Standard Blockout



Tapered Blockout



Midwest Roadside Safety Facility

Short Radius SR-8

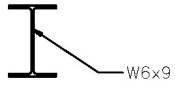
Thrie Beam CRT Post
BSR Post
Standard and Tapered Blockout

DWG. NAME:
Short_Radius_sr8_R4

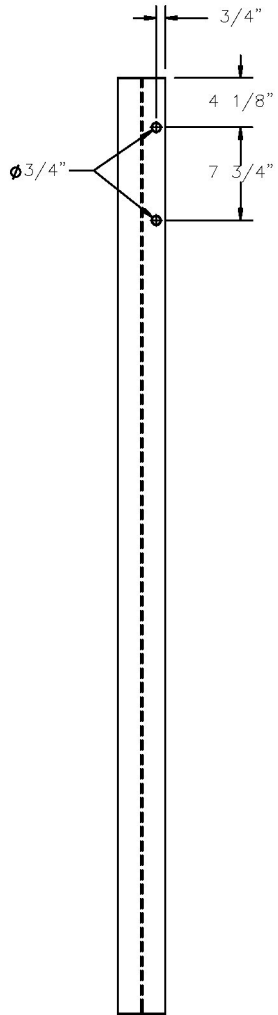
SCALE: 1:12
UNITS: Inches

SHEET:
11 of 19
DATE:
7/31/2007
DRAWN BY:
CSS
REV. BY:
KAP, BWB

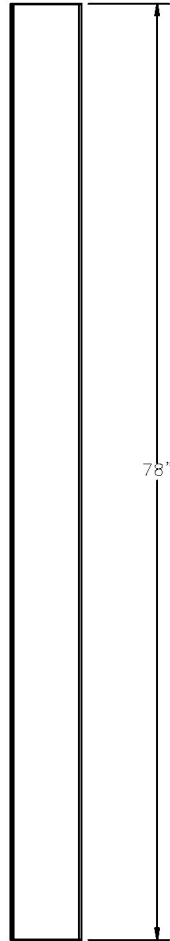
TOP VIEW



W6x9

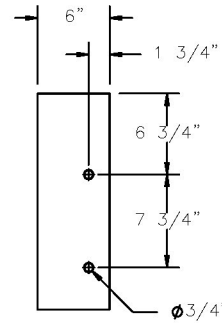
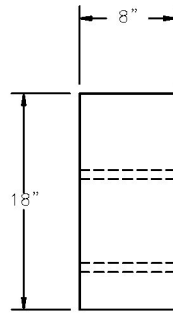


FRONT VIEW

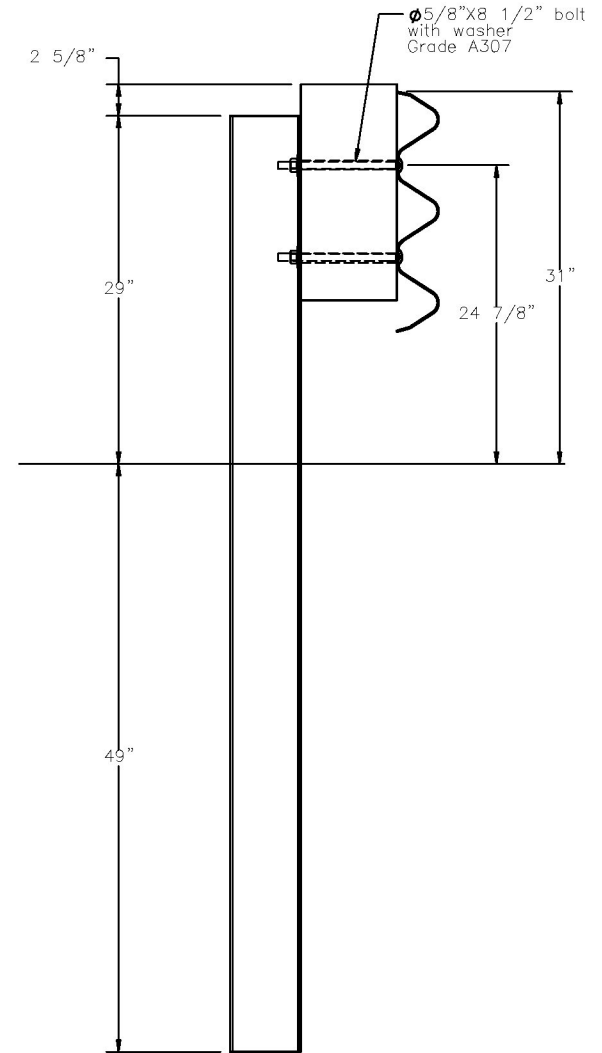


SIDE VIEW

TRANSITION POSTS



TRANSITION BLOCKOUT



Iowa Transition Post
6'-6" long with 18" blockout
Post Nos. 14P-19P



Midwest Roadside
Safety Facility

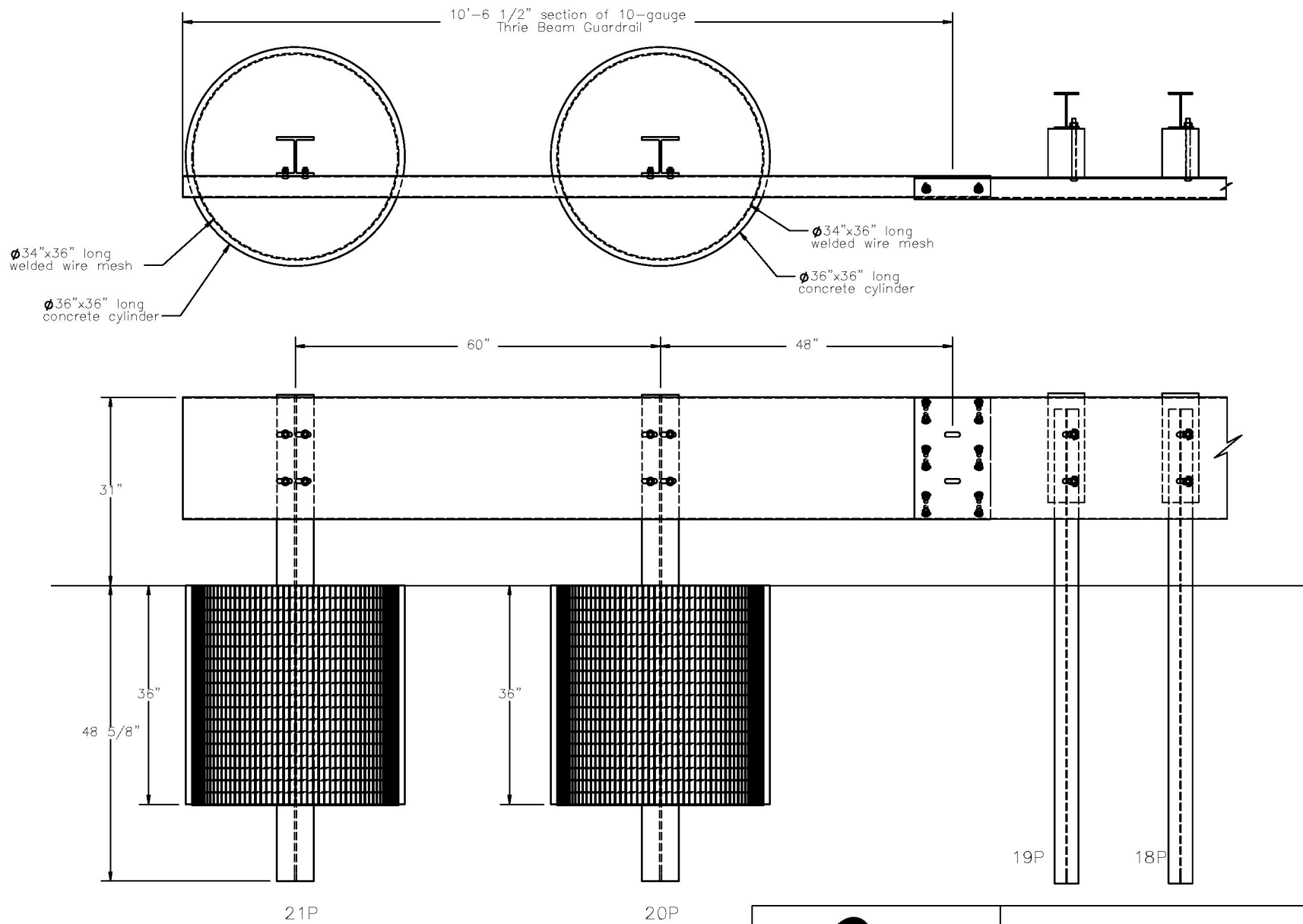
Short Radius SR-8

Post Nos. 14P-19P Details

DWG. NAME:
Short_Radius_sr8_R4

SCALE: 1:16
UNITS: Inches

SHEET:
12 of 19
DATE:
7/31/2007
DRAWN BY:
CSS
REV. BY:
KAP, BWB



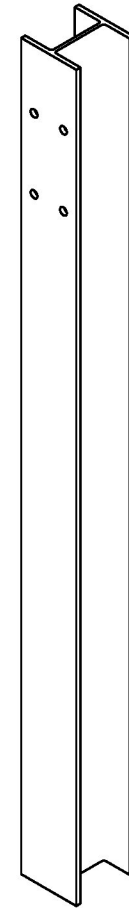
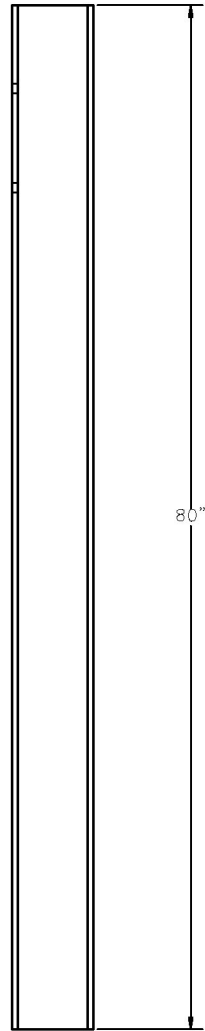
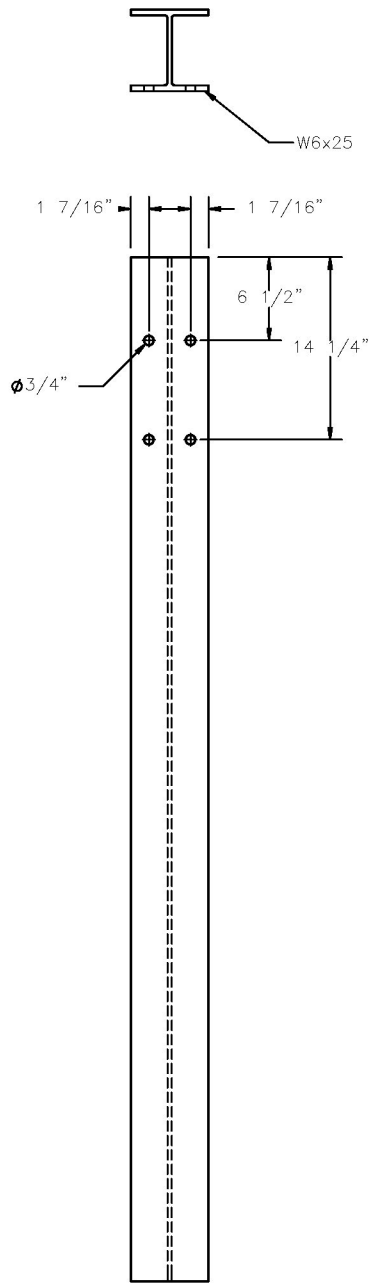
Midwest Roadside
Safety Facility

Short Radius SR-8
TL-3 Side
End Anchorage Details

DWG. NAME:
Short_Radius_sr8_R4

SCALE: 1:24
UNITS: Inches

SHEET:
13 of 19
DATE:
7/31/2007
DRAWN BY:
CSS
REV. BY:
KAP, BWB



Midwest Roadside
Safety Facility

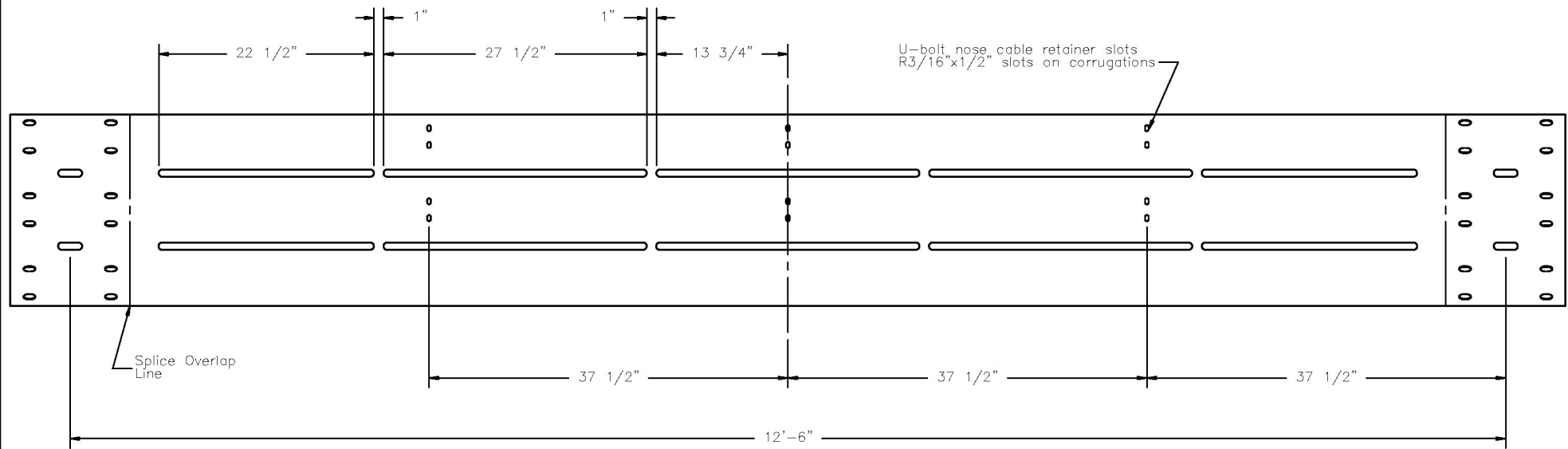
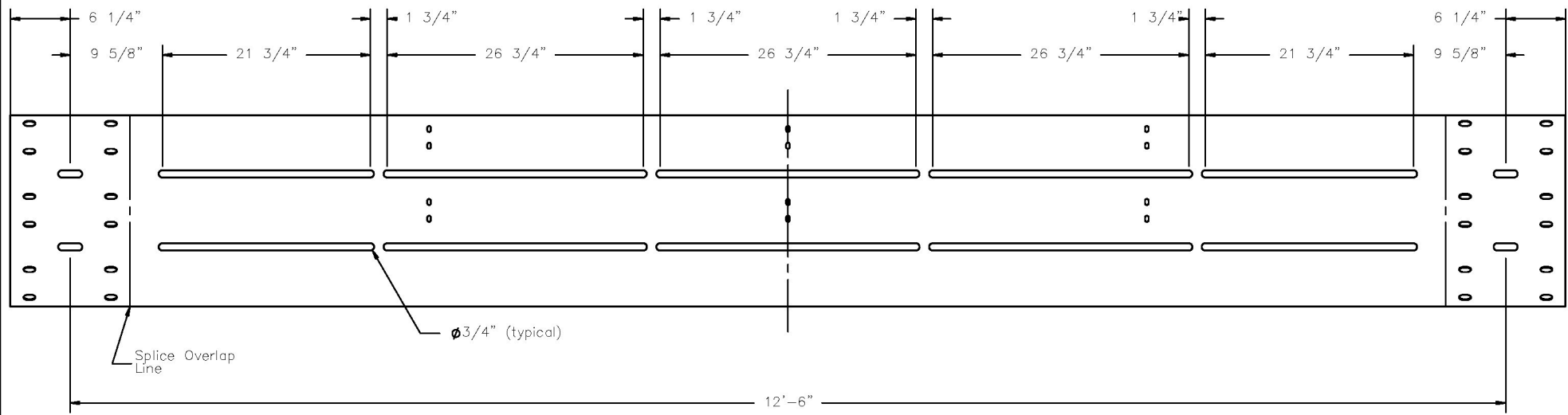
Short Radius SR-8

W6x25 Steel Post

DWG. NAME:
Short_Radius_sr8_R4

SCALE: 1:15
UNITS: Inches

SHEET:
14 of 19
DATE:
7/31/2007
DRAWN BY:
CSS
REV. BY:
KAP, BWB



Midwest Roadside Safety Facility

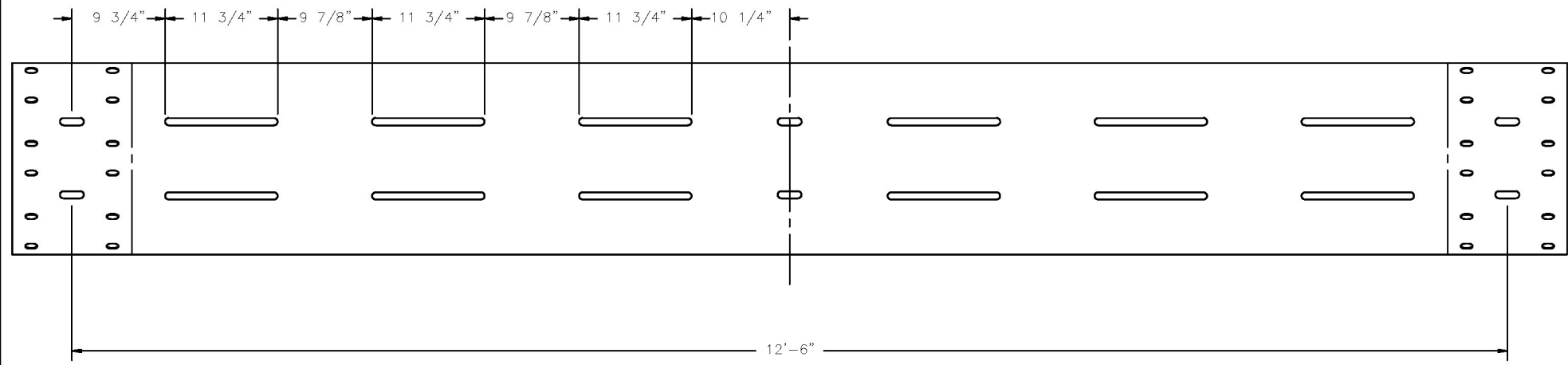
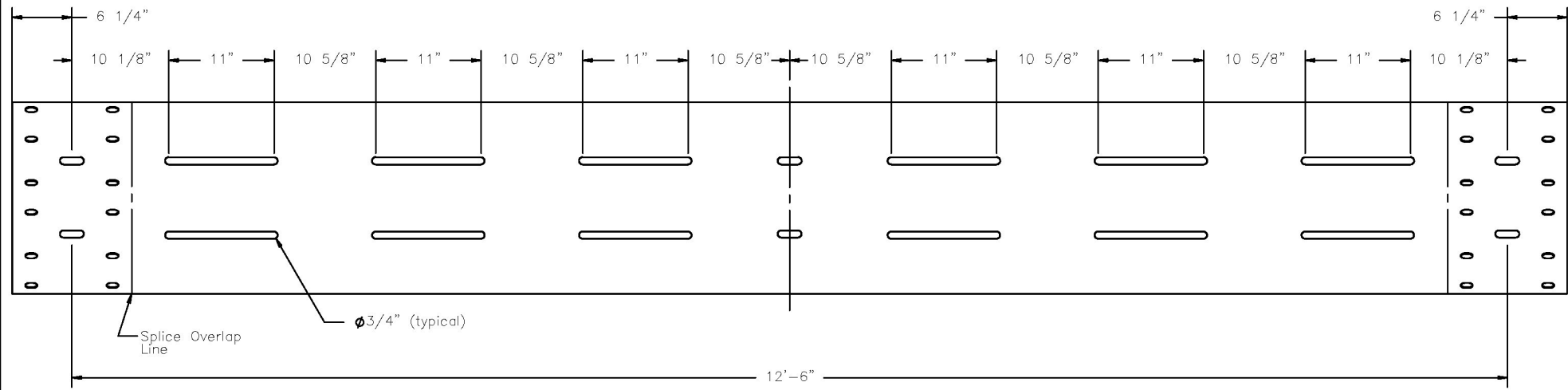
Short Radius SR-8

Thrie Beam Section Slot Pattern No. 1

DWG. NAME:
Short_Radius_sr8_R4

SCALE: 1:16
UNITS: Inches

SHEET:
15 of 19
DATE:
7/31/2007
DRAWN BY:
CSS
REV. BY:
KAP, BWB



Midwest Roadside Safety Facility

Short Radius SR-8

Thrie Beam Section Slot Pattern No. 2

DWG. NAME:
Short_Radius_sr8_R4

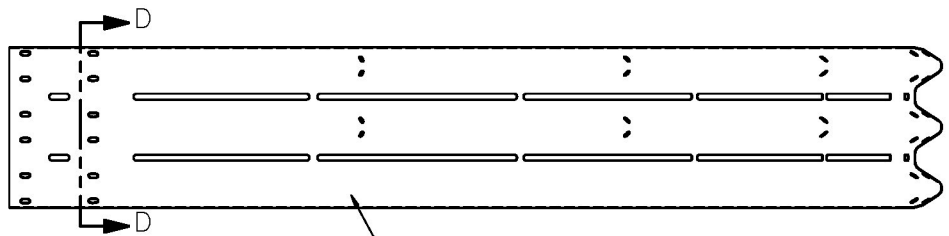
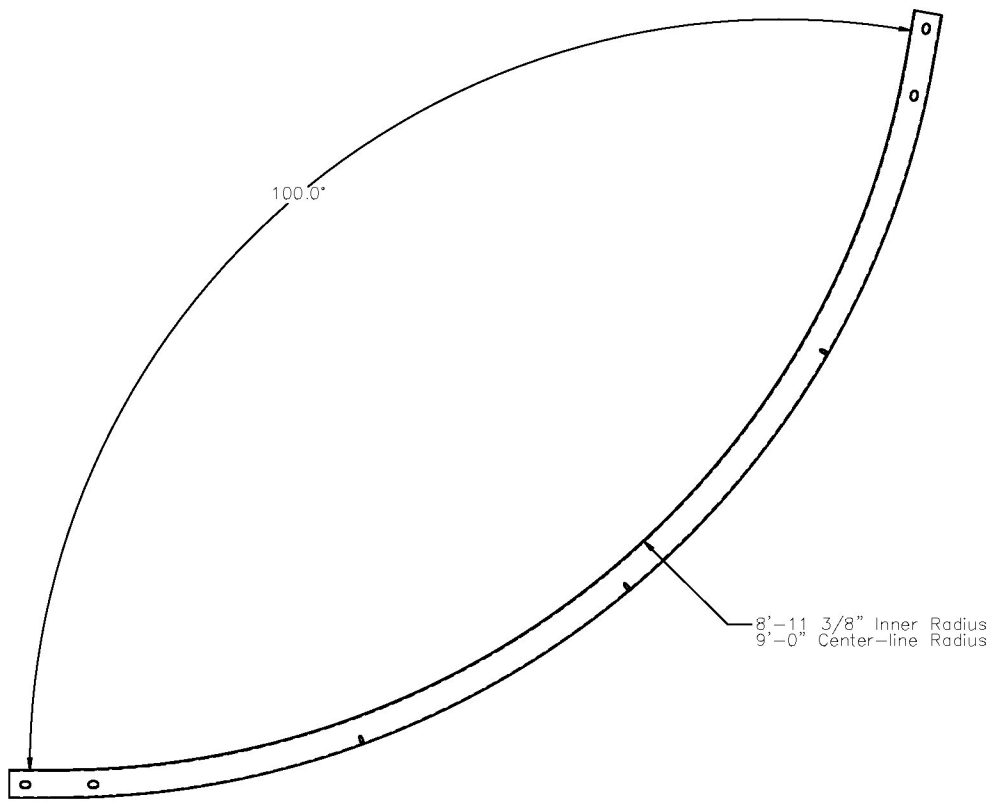
SCALE: 1:16
UNITS: Inches

SHEET:
16 of 19

DATE:
7/31/2007

DRAWN BY:
CSS

REV. BY:
KAP, BWB



SECTION D-D

12'-6" Thrie Beam, 12-gauge



Midwest Roadside Safety Facility

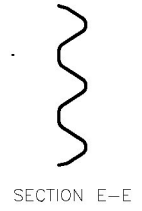
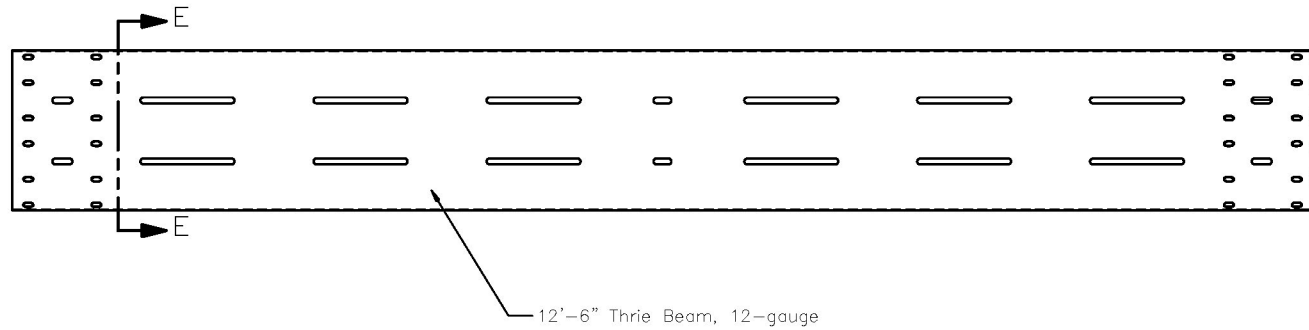
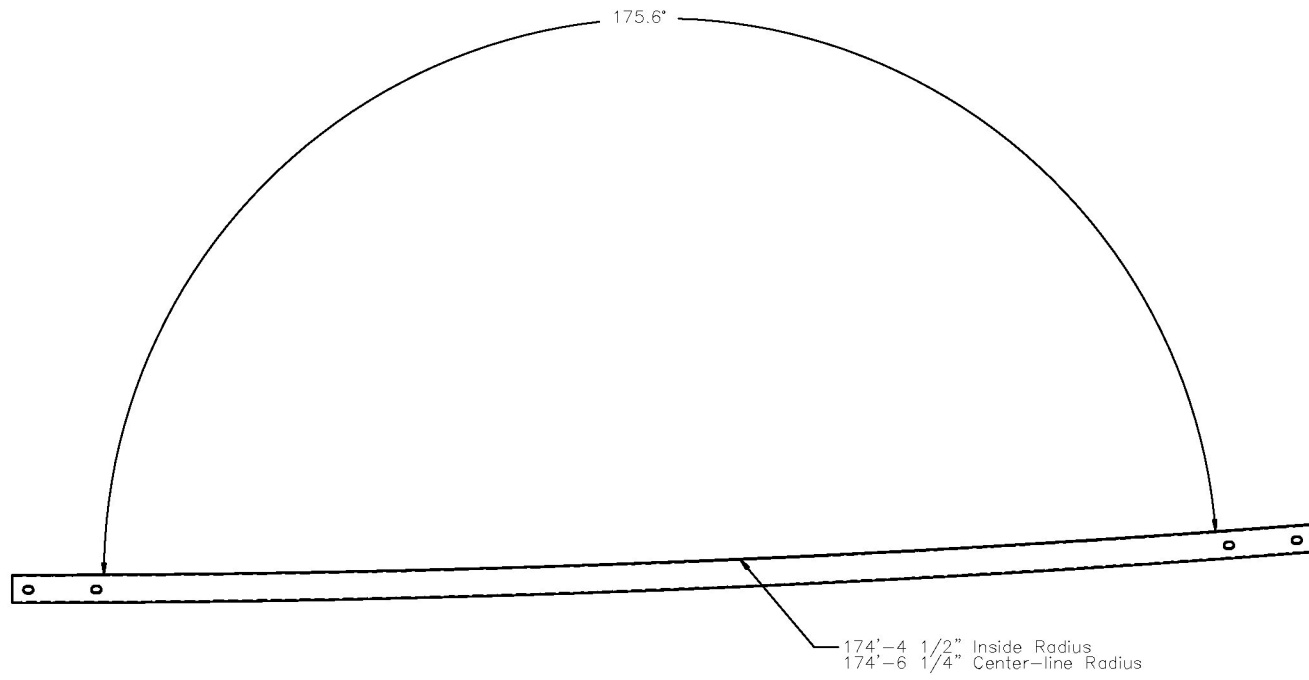
Short Radius SR-8

Thrie Beam Section
Bend Radius No. 1

DWG. NAME:
Short_Radius_sr8_R4

SCALE: 1:24
UNITS: Inches

SHEET:
17 of 19
DATE:
7/31/2007
DRAWN BY:
CSS
REV. BY:
KAP, BWB



Midwest Roadside
Safety Facility

Short Radius SR-8

Thrie Beam Section
Bend Radius No. 2

DWG. NAME:
Short_Radius_sr8_R4

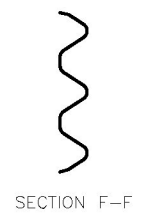
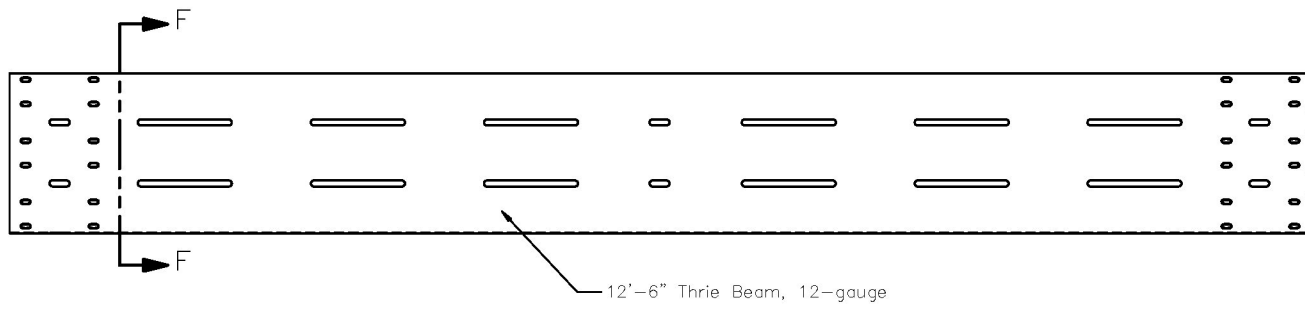
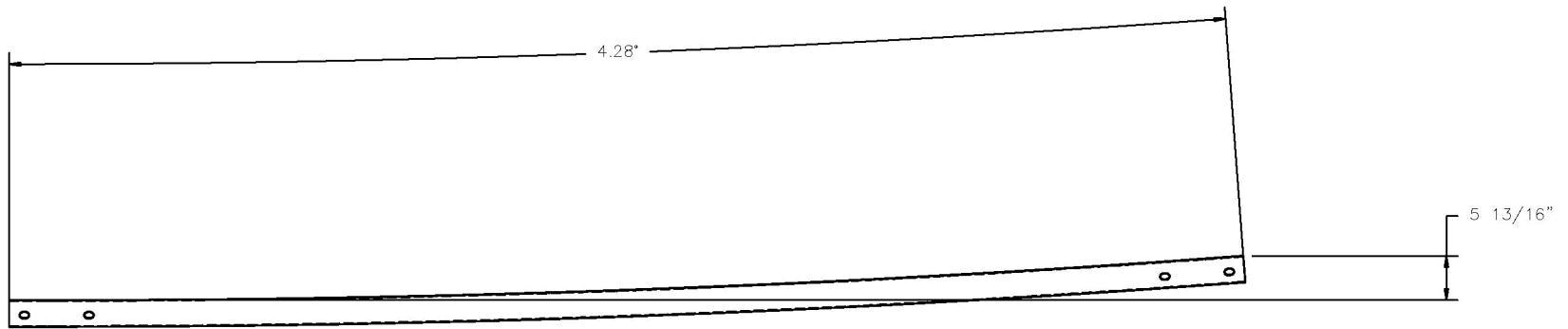
SCALE: 1:24
UNITS: Inches

SHEET:
18 of 19

DATE:
7/31/2007

DRAWN BY:
CSS

REV. BY:
KAP, BWB



Midwest Roadside
Safety Facility

Short Radius SR-8

Thrie Beam Section
Bend Radius No. 3

DWG. NAME:
Short_Radius_sr8_R4

SCALE: 1:24
UNITS: Inches

SHEET:
19 of 19

DATE:
7/31/2007

DRAWN BY:
CSS

REV. BY:
KAP, BWB