

Note: (1) Foundation and mounting hardware not shown.



Midwest Roadside
Safety Facility

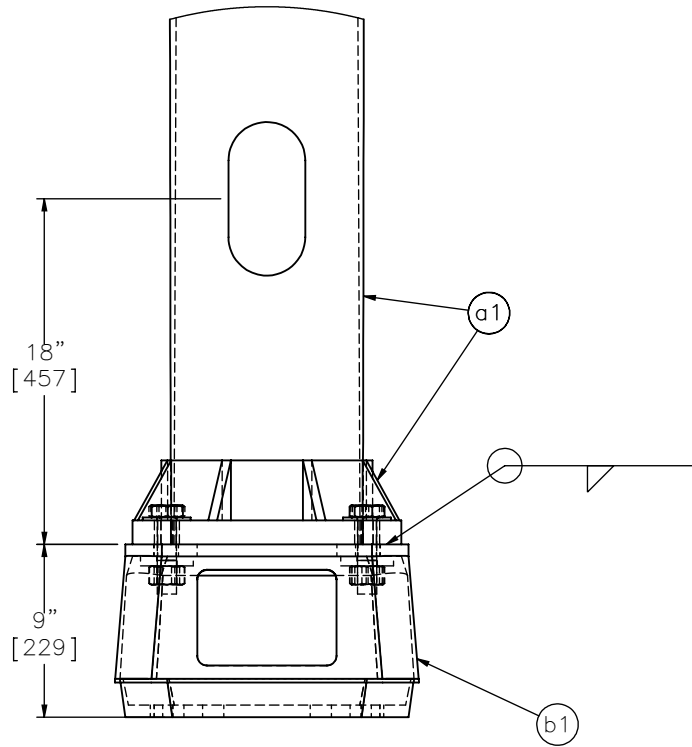
Illinois Tollway Pole
System Layout

DWG. NAME.
Illinois_Tollway_Pole_R2

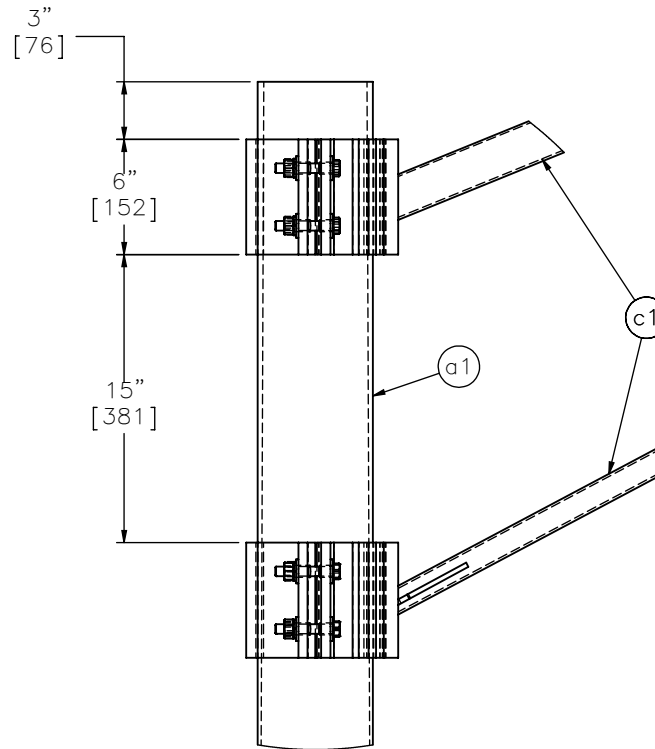
SCALE: 1:35
UNITS: In.[mm]

SHEET:
1 of 6
DATE:
3/22/2016
DRAWN BY:
TJD
REV. BY:
KAL/RWB

ELEVATION VIEW



DETAIL A

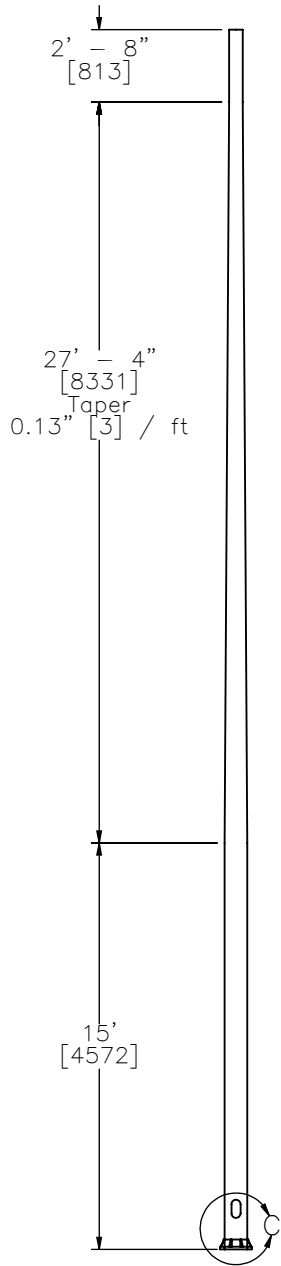


DETAIL B

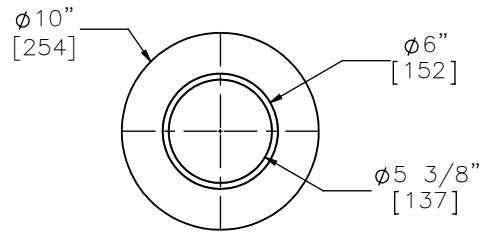


Midwest Roadside
Safety Facility

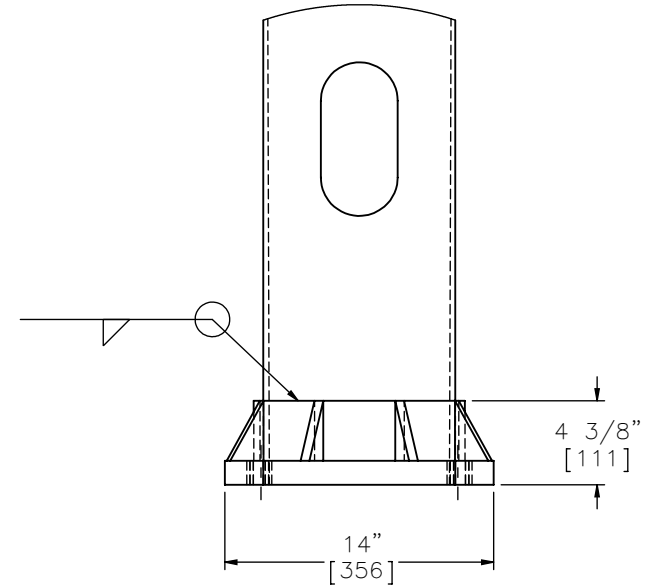
Illinois Tollway Pole		SHEET: 2 of 6
		DATE: 3/22/2016
Description of View		DRAWN BY: TJD
		REV. BY: KAL/RWB
DWG. NAME: Illinois_Tollway_Pole_R2	SCALE: 1:10 UNITS: In.[mm]	



ELEVATION VIEW



PLAN VIEW



DETAIL C

Part a1



Midwest Roadside
 Safety Facility

Illinois Tollway Pole

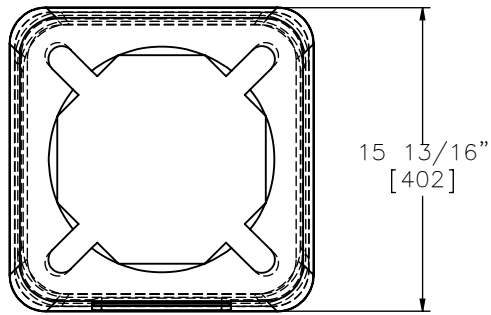
Pole Detail

DWG. NAME.
 Illinois_Tollway_Pole_R2

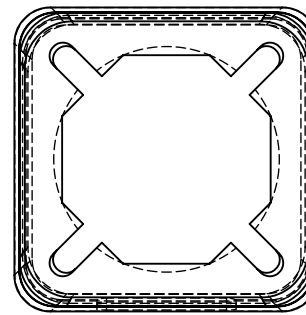
SCALE: 1:10
 UNITS: In.[mm]

SHEET:
 3 of 6
 DATE:
 3/22/2016
 DRAWN BY:
 TJD

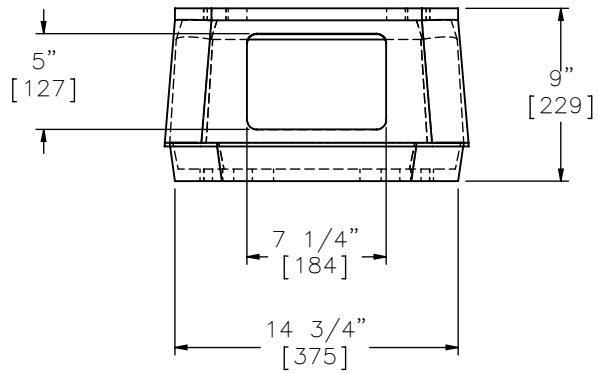
REV. BY:
 KAL/RWB



PLAN VIEW




BOTTOM VIEW



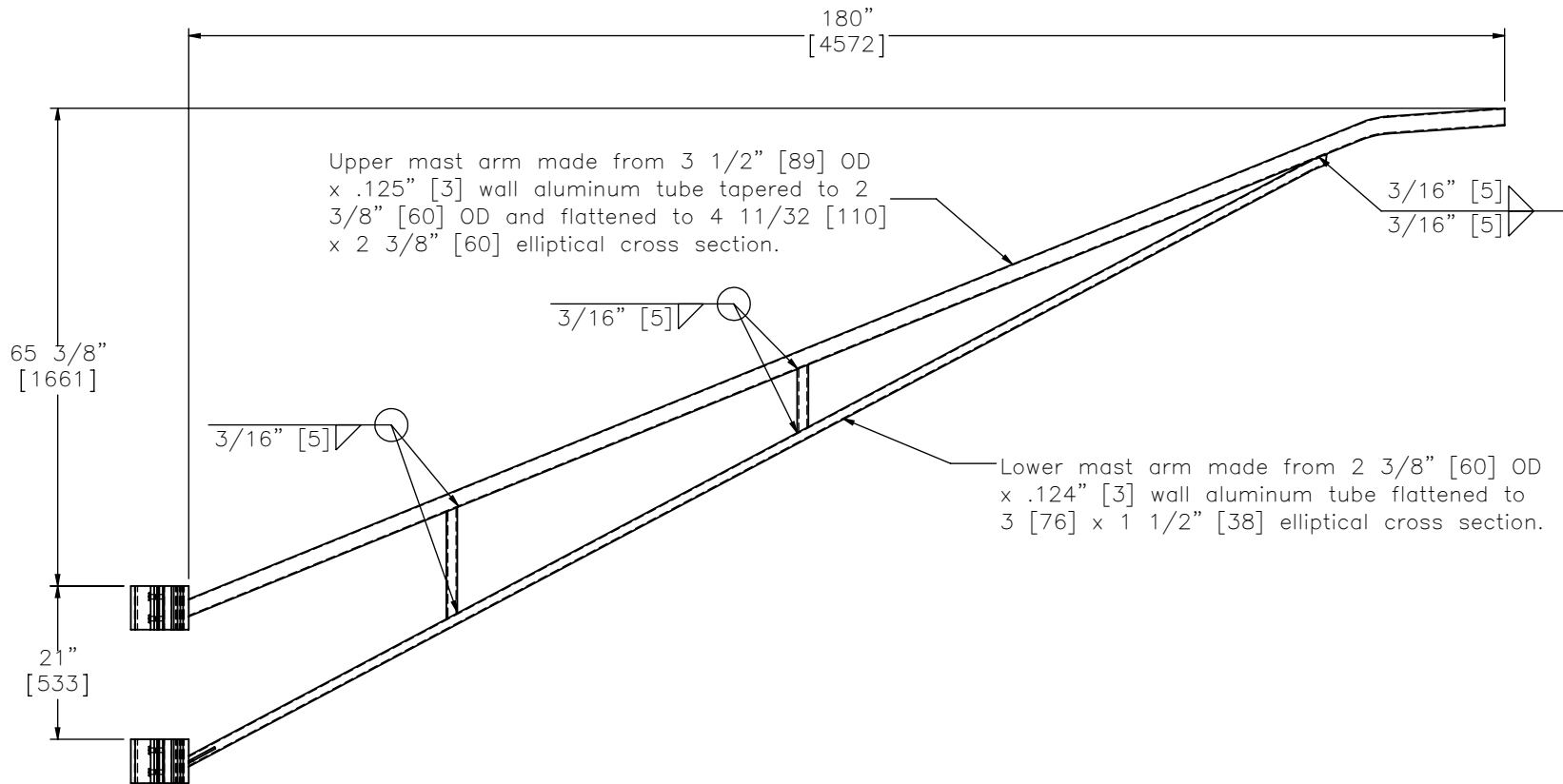
ELEVATION VIEW
Part b1

Note: (1) The pole (Part a1) is attached to the base using connecting bolts, flat washers, bearing washers, and hex nuts provided with the base assembly (Part b1).

	Illinois Tollway Pole		SHEET: 4 of 6
	Anchor Base Detail		DATE: 3/22/2016
Midwest Roadside Safety Facility	DWG. NAME: Illinois_Tollway_Pole_R2	SCALE: 1:10 UNITS: In.[mm]	DRAWN BY: TJD REV. BY: KAL/RWB




PLAN VIEW




ELEVATION VIEW
Part c1

Note: (1) Connecting bolts, flat washers, lock washers, and hex nuts are provided with truss assembly (Part c1).

 Midwest Roadside Safety Facility	Illinois Tollway Pole	SHEET: 5 of 6
	Truss Detail	DATE: 3/22/2016
DWG. NAME: Illinois_Tollway_Pole_R2	SCALE: 1:25 UNITS: In.[mm]	DRAWN BY: TJD
		REV. BY: KAL/RWB

Item No.	QTY.	Description	Material Spec	Hardware Guide
a1	1	45ft [13716] Long Aluminum Pole, Pay Item No. 903A10, JS830003	6063-T4 Aluminum Alloy	-
b1	1	CS-370 Anchor Base, Model No. 10R145153B9T	6063 Aluminum Alloy	-
c1	1	Truss, Model No. 1TA1566C60ZA	6063-T6 Aluminum Alloy	-

	Illinois Tollway Pole	SHEET: 6 of 6
	Bill of Materials	DATE: 3/22/2016
Midwest Roadside Safety Facility	DWG. NAME: Illinois_Tollway_Pole_R2	SCALE: 1:200 UNITS: In.[mm]
		REV. BY: KAL/RWB

Revision History

REV.	DATE OF ISSUE	Page	NATURE OF CHANGES	REVIEWER	REVISED BY
0	3/15/2016	–	Drawing Created from Valmont Drawings.	–	TJD
1	3/15/2016	1	Moved detail view to a new page. Dimension edits.	KAL	TJD
		2	Moved part a1 to a new page. Dimension edits.		
		3	Fixed base drawing. Added note.		
		4	Note edit. Added top view.		
		5	Removed page as it is not a part of the light pole.		
		6	Bill of materials edits.		
2	3/22/2016	1	Note added.	RWB	TJD