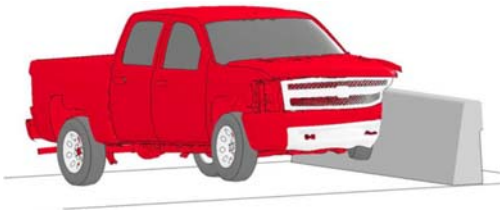


# **CIVIL & ENVIRONMENTAL and MECHANICAL & MATERIALS** **ENGINEERING**

## **Graduate Research Assistant Opportunities**



**Midwest Roadside Safety Facility**  
University of Nebraska-Lincoln  
130 Whittier Research Center  
Lincoln, Nebraska 68583-0853  
<http://mwrsf.unl.edu>



### **What is MwRSF:**

- an internationally-recognized organization which conducts highway/roadside/race track safety research
- design, develop, test, and evaluate roadside safety features, including guardrails, bridge rails, end terminals, crash cushions, sign supports, luminaire poles
- developed the SAFER Barrier, an energy-absorbing barrier system for high-speed race track applications, and continue to develop and improve other race track safety features in cooperation with Indy Racing League, Indianapolis Motor Speedway, and NASCAR
- active in conducting cost-effective analyses in order to determine the appropriateness of safety improvements
- recognized as a leader in computer simulation modeling of roadside safety features through FHWA's Center of Excellence

### **Requirements:**

- must be admitted to or applying to graduate school at UNL
- minimum GPA
- outstanding academic performance in core engineering classes
- self-motivated, work independently, and highly responsible
- PC literate
- word-processing and spreadsheet software experience
- computer-aided drafting software (AutoCAD, Solidworks) experience

**For more information and questions, please contact:**

### **CIVIL & ENVIRONMENTAL ENGINEERING**

Dr. Ronald Faller, P.E.  
[rfaller1@unl.edu](mailto:rfaller1@unl.edu)  
(402) 472-6864

### **MECHANICAL & MATERIALS ENGINEERING**

Dr. Cody Stolle  
[cstolle2@unl.edu](mailto:cstolle2@unl.edu)  
(402) 472-4233

